

Guelph Public Library

2024 Year in review

“The Library provides a hub for people to gather, a safe place for reading, using computers, for some shelter for part of the day. It provides learning opportunities for children and a social hub.” - Community member

Annual visits and library cards

848,531
in person visits



1,094,629
online visits



8,348 new
cardholders



Services accessed by patrons

2,217,944
item
checkouts



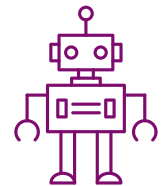
402,723
e-resource
sessions



35,264
program
participants

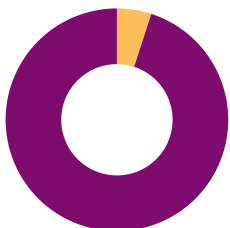


3,491
makerspace
creators



Growth

5% increase in daily
inquiries



28% increase in
program attendance



11% increase in
makerspace users



Alternative formats are available by contacting Library Communications at 519-824-6220.

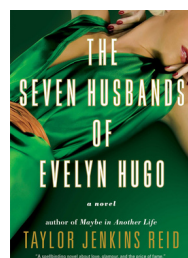
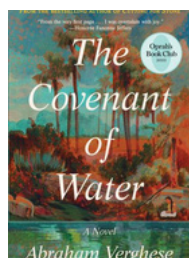
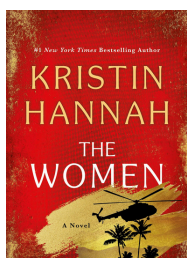


Guelph Public Library
Explore • Connect • Thrive

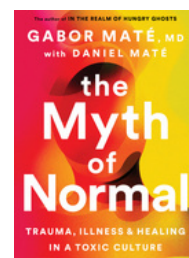
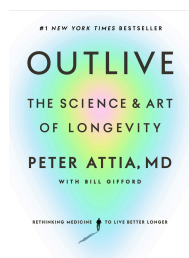
Guelph Public Library

Popular materials

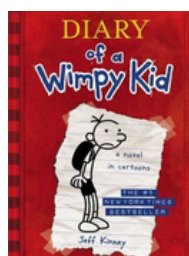
Top three adult fiction books



Top three adult non-fiction books



Top junior materials and picture books



Popular items in the Library of Things

Disc golf sets



Headphones



Ontario Parks Pass



WIFI Hotspots



Alternative formats are available by contacting Library Communications at 519-824-6220.



Guelph Public Library
Explore • Connect • Thrive

Guelph Public Library

Our community impact



Makerspace: 3D Printer Restores Beloved Hobby

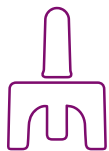
For Connor Gianetto-Hill, a University of Guelph PhD candidate in Microbiology, sewing is a creative outlet while studying. When his sewing machine broke and the company no longer sold parts to fix it, his ability to create stopped – until he found the Makerspace. Staff were able to print the piece he needed and at no cost. Not only was Connor able to get back to sewing, the Library’s Makerspace helped save an expensive sewing machine from ending up in the garbage.

Teen Advisory Group: Build friendships and community

High school can be a challenging time for many teens. Luckily for Guelph resident, Gemma, she was able to expand her friend groups, plan for the future, develop leadership skills and earn her mandatory volunteer hours through the Library’s Teen Advisory Group (TAG).



Community building highlights from 2024



Additional harm reduction tools like contraceptives, Nalaxone training, and BRAVE sensors.



Diversified program offerings and developed in-person and digital ways to participate.



Enhanced community partnership agreements that help us tell stories collaboratively.

Alternative formats are available by contacting Library Communications at 519-824-6220.



Guelph Public Library
Explore • Connect • Thrive